



WEE CRITTERS

INTERACTIVE ANIMAL EDUCATION

A VISUAL GUIDE
TO YOUR WEE CRITTERS EXPERIENCE!



WWW.WEECRITTERS.ORG



WEE CRITTERS IS GOING TO VISIT YOU FOR AN INTERACTIVE ANIMAL EDUCATION SESSION AT YOUR SCHOOL, GROUP, PARTY OR EVENT.

This visual guide will help you to prepare for our visit and will provide lots of information on what you can expect before, during and after your interactive animal education session.

MEET ALLAN THE EXPLORER

STARTING YOUR ADVENTURE

OUR RANGER RULES

MEETING THE WEE CRITTERS

SENSORY BACKPACKS

AFTER THE VISIT



HI! I'M ALLAN THE EXPLORER



YOUR INTERACTIVE ANIMAL EDUCATION SESSION
WILL BE CARRIED OUT BY ALLAN THE EXPLORER!

Allan will be wearing a beige safari shirt, green trousers and an explorer hat.

For some larger events, Allan will have helpers with him. Our staff and volunteers all wear green t-shirts and green jackets which all have the Wee Critters logo on the front.



STARTING YOUR ADVENTURE



There will be a table, backdrop and some props set up at the front of the room. You should not enter this area during the experience unless Allan the Explorer invites you to the front. You will be sitting in front of this area and it's important to stay in the space or chair that you are given.

AT THE START OF THE EXPERIENCE
EVERYONE WILL BE GIVEN AN
EXPLORER HAT TO WEAR!



OUR RANGER RULES

At the start of the interactive animal education session, Allan the Explorer will introduce you to our 'ranger rules'. These are rules and behaviours that everyone must follow during the experience. These rules make sure that everyone enjoys the experience in a fun and safe way. They also make sure that the wee critters are happy!



MEETING THE WEE CRITTERS

The wee critters are a big part of Allan the Explorer's family and they help him to share important messages about the world around us, the animals we share it with and the wee ways that we can all make the world a better place.



VISIT WWW.WEECRITTERS.ORG/MEETOURCRITTERS TO FIND OUT MORE ABOUT OUR ANIMALS.

From the curiously cute to the creepy and crawly, a carefully selected team of our 'wee critters' will join us for your session.

WE CAN'T GUARANTEE WHICH WEE CRITTERS WILL BE AT YOUR SESSION. IT DEPENDS ON A NUMBER OF FACTORS INCLUDING EATING PATTERNS, SHEDDING PATTERNS, BREEDING SEASONS, TRAVEL TIME, TEMPERATURE, REST DAYS AND THE WEE CRITTERS ALSO GET TO DECIDE WHETHER THEY FEEL LIKE TAKING PART.



Allan the Explorer will bring the wee critters out to meet you, one by one. He will tell you all about each animal and you will then get the chance to interact with them. It's important to be kind, be gentle, keep the volume down and follow the instructions that you are given.



YOU WILL NOT BE ABLE TO TOUCH SOME OF THE WEE CRITTERS BUT YOU CAN GET A CLOSER LOOK.



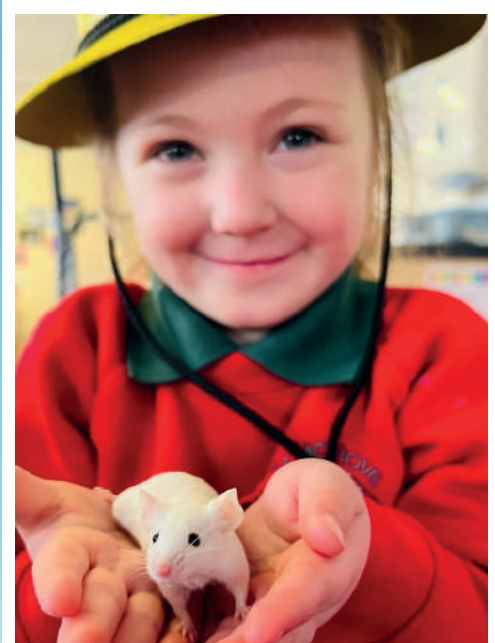
YOU WILL BE ABLE TO HOLD SOME OF THE WEE CRITTERS ON A BOARD.



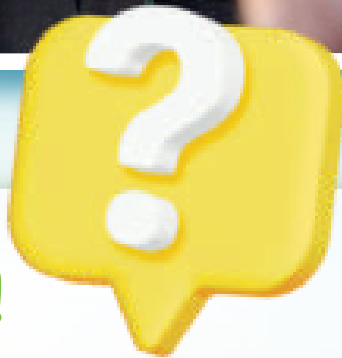
SOME OF THE WEE CRITTERS MAY EVEN SIT ON YOUR EXPLORER HAT.



SOME MAY EVEN HOP, SCURRY OR CRAWL BY!



YOU WILL ALSO GET TO PET, TOUCH AND HOLD SOME OF THE WEE CRITTERS!



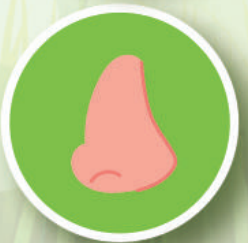
AFTER EACH WEE CRITTER IS INTRODUCED YOU CAN ASK QUESTIONS. JUST PUT YOUR HAND UP!



It's fascinating to have a closer look at animals; exploring their colours, textures and amazing ways of moving.



Animals are covered in skin, fur, scales, feathers and spikes! It is fun to find out how they feel.



All animals have their own unique smells. Some may be a little bit stinkier than others!



Most of the wee critters are quiet. Our parrot pals can be quite noisy. If you are sensitive to sound just let us know!

SENSORY BACKPACKS

You are more than welcome to bring sensory items, toys or equipment to our interactive animal education sessions (as long as they aren't noisy)! At public events we bring along a couple of armadillo sensory backpacks which can be borrowed for the session. These backpacks contain a number of sensory toys and resources and can be collected from the front of the room / area or just ask Allan the Explorer.



AFTER THE VISIT



At the end of the visit it is important to visit the bathroom to wash your hands with soap and warm water.



AFTER THE SESSION YOU WILL RECEIVE A STICKER WHICH WILL FEATURE ONE OF THE WEE CRITTERS!

ALLAN THE EXPLORER HAS COMPLETED A RANGE OF TRAINING TO MAKE OUR SERVICE AS ACCESSIBLE AND ENJOYABLE AS POSSIBLE:

- ✓ Disability Awareness Training
- ✓ Learning Disabilities Awareness Certification
- ✓ Understanding Autism Certification
- ✓ Autism Awareness Training (Autism NI)
- ✓ Understanding the Autism Spectrum (Queens University)
- ✓ Sensory Steps Training, ASD Processing and Sensory Equipment Training
- ✓ JAM Card Training
- ✓ Sensory Loss Awareness Training
- ✓ Child Protection Training (level 2)

AutismNI 
Impact Award
**Education
Champion**





A WILD TIME AWAITS...



079 1278 5047



hello@weecritters.org



/WeeCrittersNI



@WeeCrittersNI

COPYRIGHT © 2021 WEE CRITTERS

WWW.WEECRITTERS.ORG